

FOR LEASE

ENTERPRISE & SEAPORT BLVD ~ WEST SACRAMENTO, CA



PROJECT FEATURES:

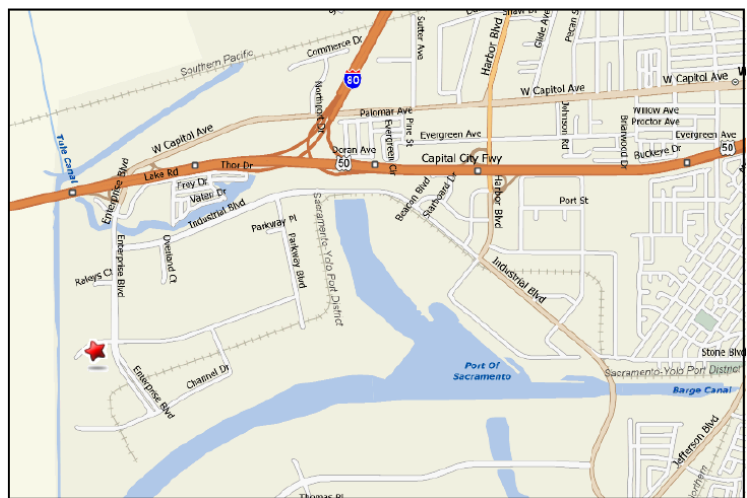
- 16' - 20' CLEAR HEIGHT
- WAREHOUSE, FULLY INSULATED
- GRADE LEVEL LOADING
- POWER: 200 AMPS 120/208 VOLT
- INDIVIDUAL SIGNAGE
- AMPLE PARKING
- EASY ACCESS TO ALL FREEWAYS
- 5 MINUTES TO DOWNTOWN
- 20 MINUTES TO AIRPORT

ADDRESS	UNIT SQ.FT.	OFFICE SQ.FT.	ASKING RENT
1984 ENTERPRISE	1,800	200	\$.45/NNN
1986 ENTERPRISE	1,800	150	\$.45/NNN
1990 ENTERPRISE	1,800	700	\$.45/NNN
4003 SEAPORT	4,480	1,100	\$.45/NNN
4007 SEAPORT	2,080	700	\$.45/NNN
4011 SEAPORT	3,000	750	\$.45/NNN

EXCLUSIVE AGENTS

Tom MacLaughlin
(916) 374-4233

Bill MacLaughlin
(916) 374-4231



1401 Shore St.
W. Sacramento, CA
Phone: 916-371-9021
Fax: 916-373-0655



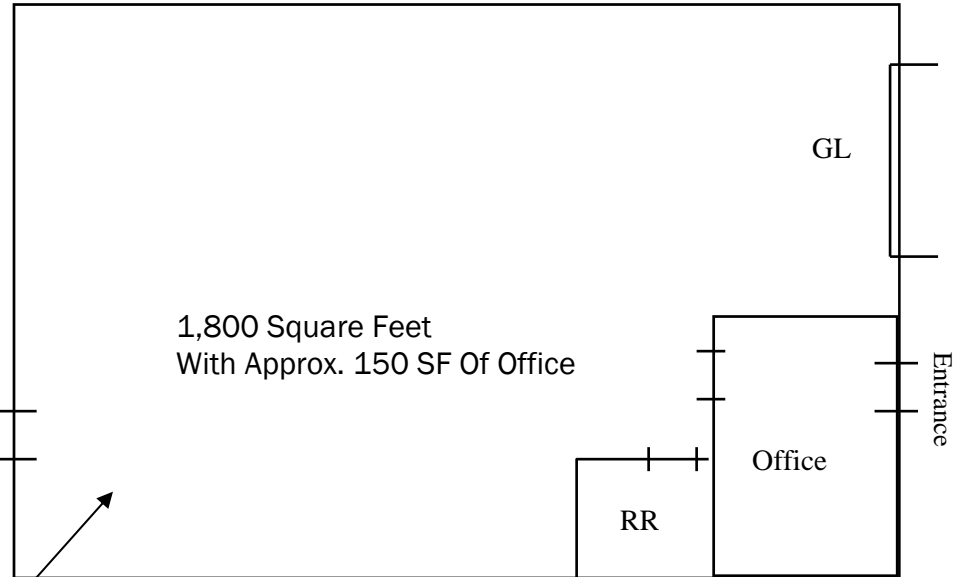
macLaughlin and CO

Commercial And Industrial Real Estate Since 1965

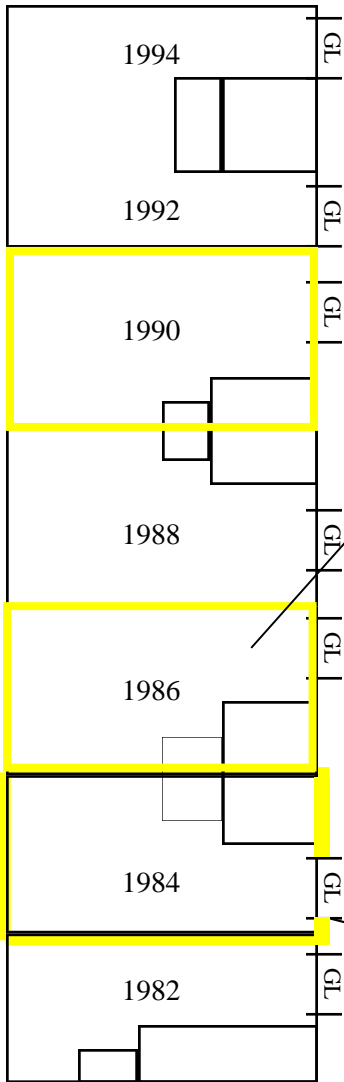
The information contained herein has been carefully checked and to the best of our knowledge is correct but we assume no liability for representations as to values or for errors or omissions in this statement. Client should carefully verify the above items of income and expenses and all other information contained herein.



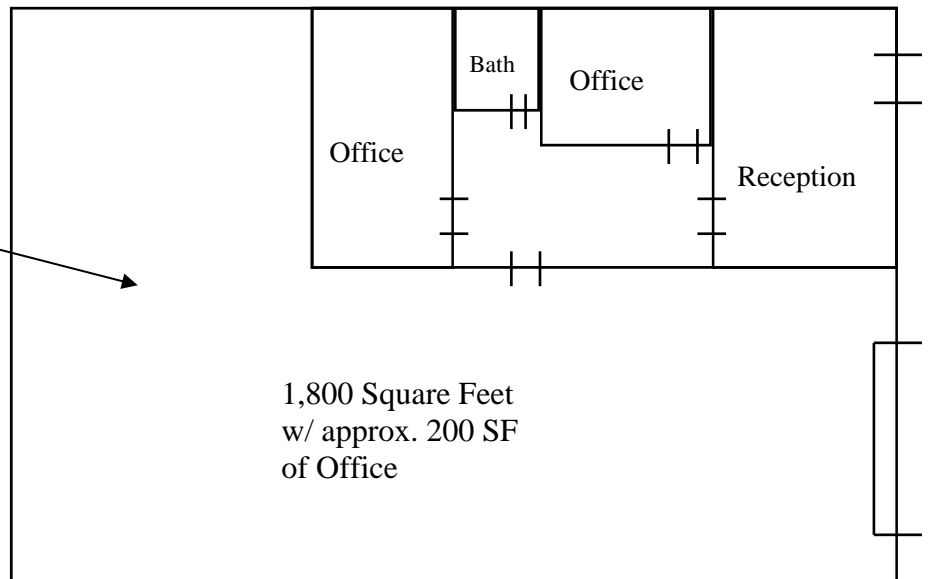
1986 Enterprise Blvd.—Floor Plans



1980-1994 Enterprise Building A

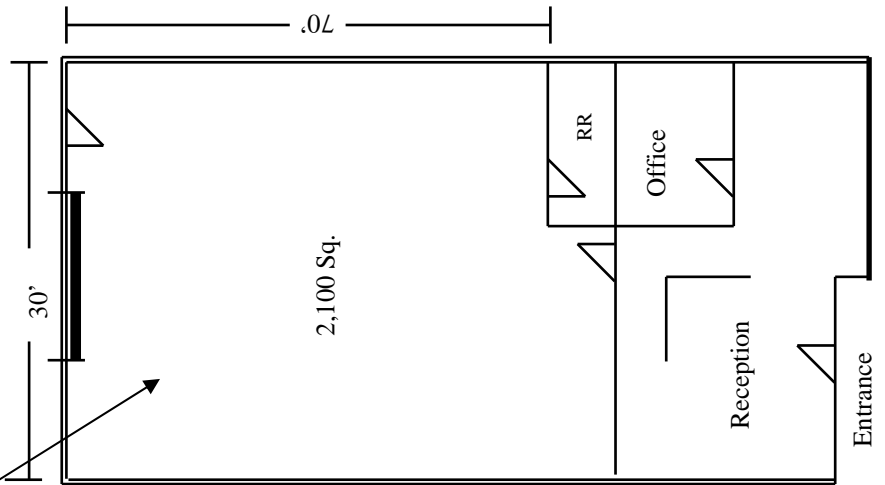


1984 Enterprise Blvd.—Floor Plans

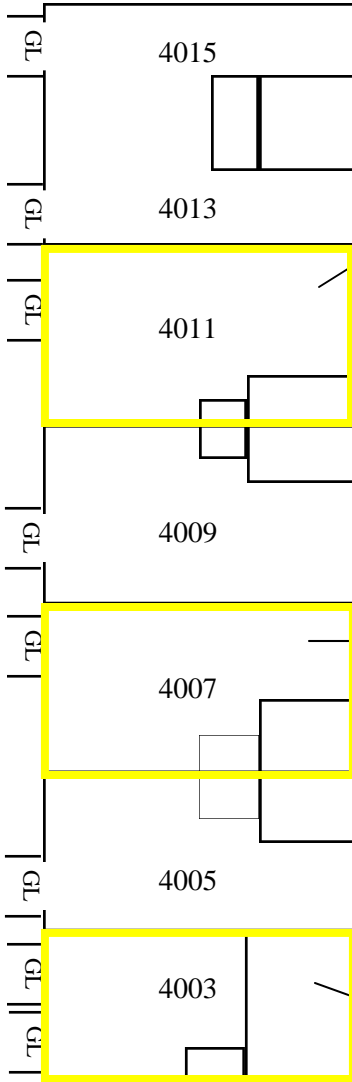




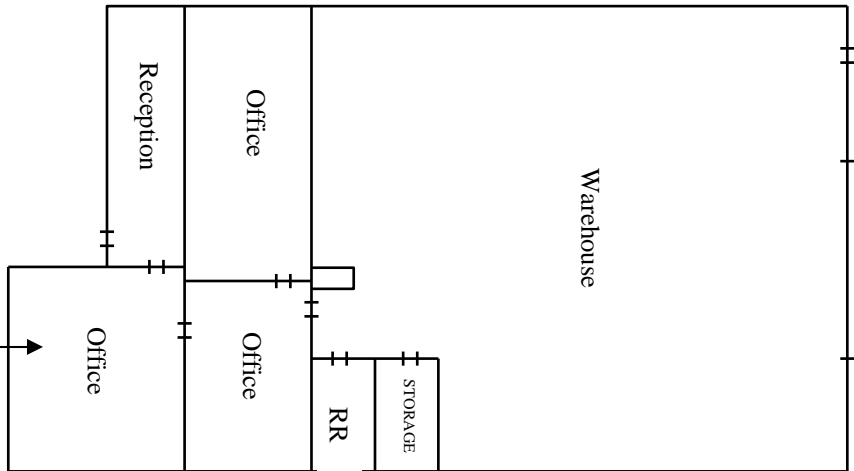
4011 SEAPORT Blvd.—Floor Plans



4003-4015 Seaport Building B



4007 SEAPORT Blvd.—Floor Plans



4003 SEAPORT Blvd.—Floor Plans

