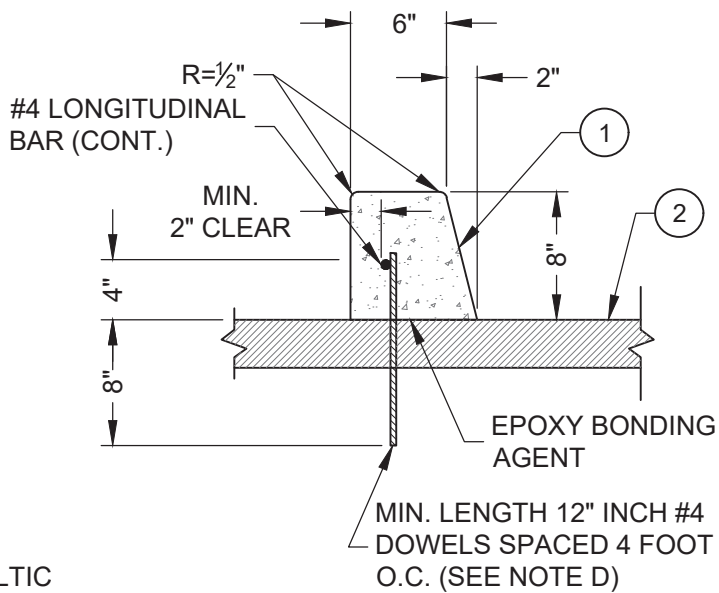


**TYPE A**



**TYPE B**

①	4000 PSI MIN. CONCRETE.
②	ASPHALT CONCRETE PAVEMENT.
③	TYPE "A" CURB SHALL BE CONSTRUCTED ON 6" OF COMPACTED AGGREGATE BASE, COMPACTION SHALL BE A MINIMUM OF 95%.

**NOTES:**

- A. TYPE "A" CURB SHALL BE INSTALLED USING ASPHALTIC EMULSION BETWEEN THE CONCRETE CURB AND THE ASPHALT CONCRETE.
- B. TYPE "B" CURB SHALL BE INSTALLED USING AN EPOXY BONDING AGENT BETWEEN THE ASPHALT CONCRETE PAVEMENT AND CONCRETE CURB.
- C. TYPE "A" AND "B" CURB SHALL HAVE 1-1/2 INCH DEEP TOOL JOINTS AT 12 FOOT INTERVALS. EXPOSED SURFACES SHALL BE LIGHT BROOM FINISHED.
- D. DRILL 1/8" LARGER HOLE THAN REBAR INTO THE EXISTING ASPHALT CONCRETE. BRUSH/BLOWOUT HOLES, INSTALLING THE REBAR, AND FILLING THE ANNULAR VOIDS WITH EPOXY WITHIN THE ASPHALT CONCRETE LAYER.

**THE CITY OF WEST SACRAMENTO - STANDARD DETAIL**



APPROVED: Aug. X, 2025

STANDARD  
DETAIL #  
**203**

TITLE:  
**MEDIAN AND  
BARRIER CURB**

