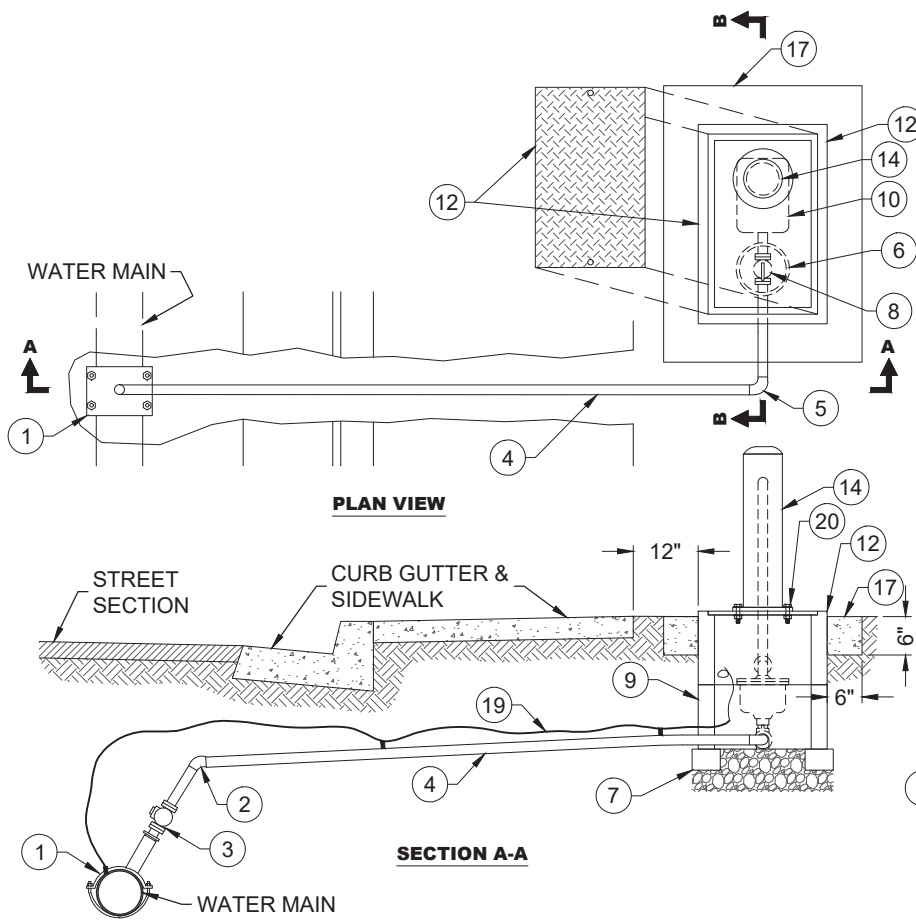


①	BRASS/BRONZE FLARE QUARTER BEND CONNECTION, IF NEEDED.
②	COPPER FLARE QUARTER BEND CONNECTION
③	CORPORATION STOP (BALL VALVE).
④	IRON PIPE SIZE 200 PSI POLYETHYLENE SERVICE TUBING WITH CONTINUOUS UPWARD GRADE PER NOTE A.
⑤	FITTINGS SHALL BE MIN 200 PSI BRONZE/BRASS FITTINGS COMPATIBLE WITH POLYETHYLENE SERVICE PIPE UNLESS OTHERWISE APPROVED BY THE CITY ENGINEER.
⑥	6" PVC SLEEVE, SDR 35 OR C900.
⑦	STANDARD MASONRY SUPPORT (BRICK). (TYP EACH BOX EDGE).
⑧	CORPORATION STOP (BALL VALVE) WITH COPPER FLARE STRAIGHT CONNECTIONS.
⑨	CHRISTY B1730x12 EXTENSION AS REQUIRED.
⑩	COMBINATION AIR/VACUUM RELEASE VALVE: VAL-MATIC VALVE AND MANUFACTURING CORPORATION MODEL 201C, OR APPROVED EQUAL.
⑪	½" CRUSHED ROCK. FILL TO BOTTOM OF VALVE.

⑫	CHRISTY B1730 REINFORCED CONCRETE BOX WITH PLACER WATERWORKS PW 218 (1730) COVER WITH 5-1/2" x 5-1/2" OPENING.
⑬	UNION (BRASS).
⑭	PLACER WATERWORKS AV18-M 6"x8" VENT TUBE HOUSING AND LID WITH 2"x1/4" BAR AND 5/8"Ø HOLE.
⑮	RESERVED
⑯	180° RETURN WITH 20 MESH SCREEN ATTACHED.
⑰	6"x6" MIN 4,000 PSI CONCRETE COLLAR AROUND UTILITY BOX.
⑱	RESERVED
⑲	TRACER WIRE SHALL BE AWG #10 SOLID COPPER WIRE WITH U.S.E. RATED INSULATION, COLOR BLUE. CONNECT TRACER WIRE TO WATER MAIN TRACER WIRE. INSTALLATION TAPE SHALL BE 3M ELECTRICAL TAPE WITH TWO COATS OF "SKOTCHKOTE FD" ELECTRICAL COATING OR APPROVED EQUAL. TRACER WIRE SHALL BE TAPED TO WATER SERVICE AT MINIMUM 10 FOOT INTERVALS WITH 10 MIL TAPE.
⑳	2 EA 5/8" STAINLESS STEEL BOLTS

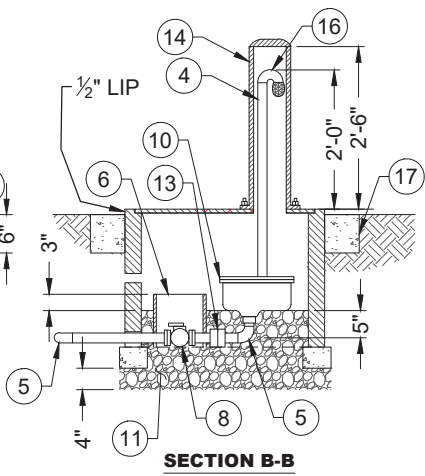


NOTES:

A. MAINTAIN A UNIFORM GRADE UPWARD FROM CORP. STOP AT WATER MAIN TO AIR VALVE (NO AIR TRAPS).

B. PIPING SIZED TO MATCH SIZE OF ARV.

C. CORPORATION STOP TO BE PLACED AT MAIN AS SHOWN.



APPROVED: Aug. X, 2025

STANDARD
DETAIL #
510

TITLE:
**1" AND 2"
AIR AND VACUUM
RELEASE VALVE**

