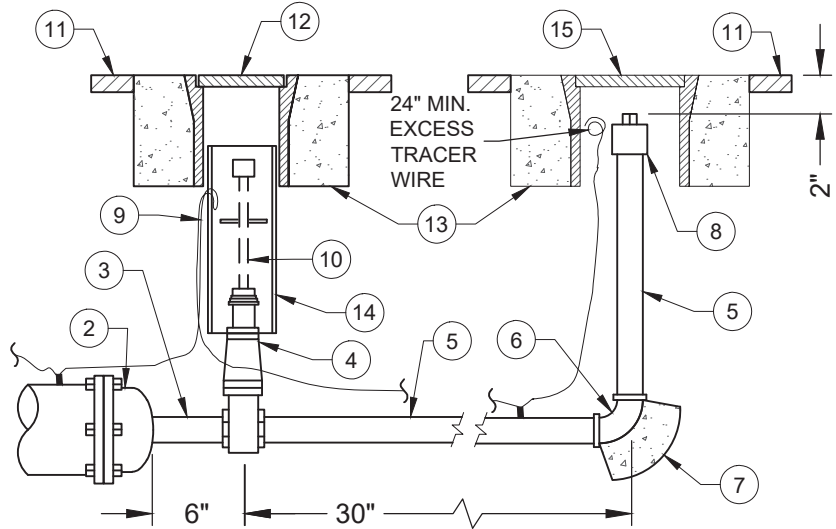


A MAIN SIZED GATE VALVE



B 2" GATE VALVE

C BLOW-OFF RISER

1	GATE VALVE SHALL BE FLANGED x MECHANICAL JOINT, RESILIENT SEAT TYPE AS PER AWWA STANDARD C-509. POLYWRAP.
2	FLANGED AND MECHANICAL JOINT CAP WITH TAPPED CAP X 2 INCH IPS.
3	2" BRASS NIPPLE.
4	2" RESILIENT SEAT GATE VALVE.
5	2" SCHEDULE 80 PVC PIPE, GLUED JOINTS.
6	2" SCHEDULE 80 PVC 90° BEND, GLUED JOINTS.
7	THRUST BLOCK (TYP) SHALL BE SIZED FOR WATER MAIN, SEE STANDARD DETAIL #519
8	2 INCH LEVERED BALL VALVE AND CAP.
9	TRACER WIRE AS PER CITY STANDARD DETAIL #513).
10	PROVIDE EXTENSION IF OPERATING NUT EXCEEDS MAXIMUM OF FOUR 4' FROM FINISHED GRADE, UNLESS OTHERWISE DIRECTED BY THE CITY ENGINEER.
11	ASPHALT CONCRETE PAVING TO MATCH EXISTING THICKNESS (MIN. 3").
12	CHRISTY G05T TRAFFIC VALVE BOX AND LID OR APPROVED EQUAL. LID SHALL READ "WATER".
13	MIN 4,000 PSI CONCRETE COLLAR WITH LAMP BLACK PIGMENT ADDED TO MATCH COLOR OF AC PAVEMENT. COLLAR SHALL MATCH ROADWAY SURFACE LEVEL.

14	EIGHT (8) INCH DIAMETER PVC RISER. C-900 OR SDR 35. RISER CASING SHALL BE PLUMB AND OVERLAP VALVE BOX DEPTH BY THREE (3) INCHES.
15	CHRISTY B-1017 TRAFFIC RATED BOX AND LID OR APPROVED EQUAL. CENTER 2" LEVERED BALL VALVE IN BOX. LID SHALL READ "WATER".

NOTES:

- A. APPLICABLE TO WATER MAINS 10 INCHES OR LESS IN DIAMETER, OR 12 INCHES TO 16 INCHES IN DIAMETER THAT DO NOT EXCEED 200 FEET IN LENGTH.
- B. ALL NUTS, BOLTS AND WASHERS ON FLANGED FITTINGS SHALL BE STAINLESS STEEL AND WRAPPED WITH 8 MIL POLYETHYLENE ENCASEMENT.
- C. CONCRETE SHALL BE MIN 4,000 PSI.
- D. APPLICABLE TO CUL-DE-SAC INSTALLATIONS:
 - 1. INSTALL GATE VALVE "B" AND BLOW-OFF RISER "C".
 - 2. IF A FIRE HYDRANT IS LOCATED AT THE END OF THE WATER MAIN, A BLOW-OFF IS NOT REQUIRED.
- E. APPLICABLE TO END OF WATER MAIN INSTALLATIONS:
 - 1. WHEN WATER MAIN INSTALLATION WILL RESUME AT A FUTURE DATE, INSTALL GATE VALVE "A" AND BLOW-OFF RISER "C".
 - 2. WHEN WATER MAIN INSTALLATION WILL NOT RESUME AT A FUTURE DATE, INSTALL GATE VALVE "B" AND BLOW-OFF RISER "C".
 - 3. IF A FIRE HYDRANT IS INSTALLED AT THE END OF A WATER MAIN, NO BLOW-OFF ASSEMBLY IS REQUIRED.
 - 4. NO WATER SERVICES ARE ALLOWED BEYOND GATE VALVE "A" UNLESS APPROVED BY THE CITY ENGINEER.



APPROVED: Aug. X, 2025

STANDARD
DETAIL #

511

TITLE:
**2" BLOWOFF
ASSEMBLY**

