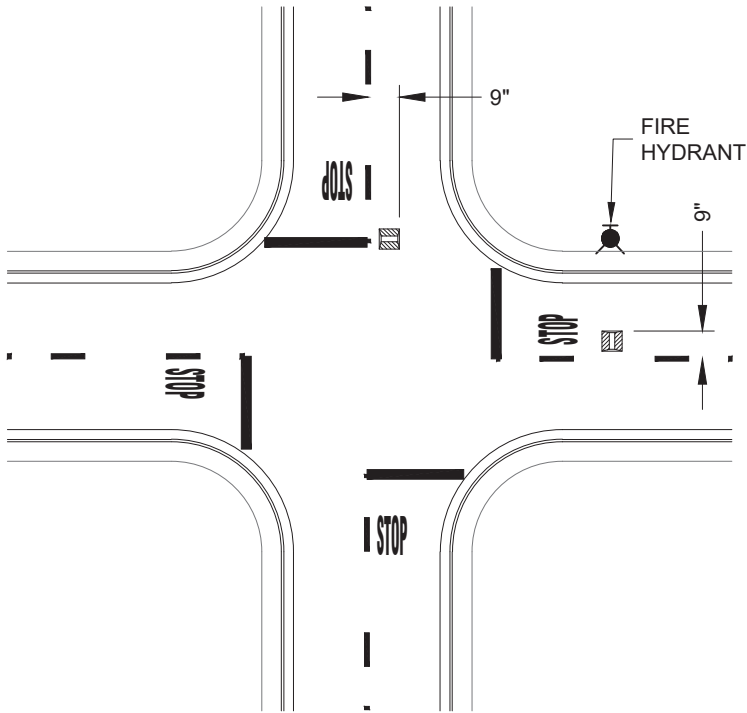
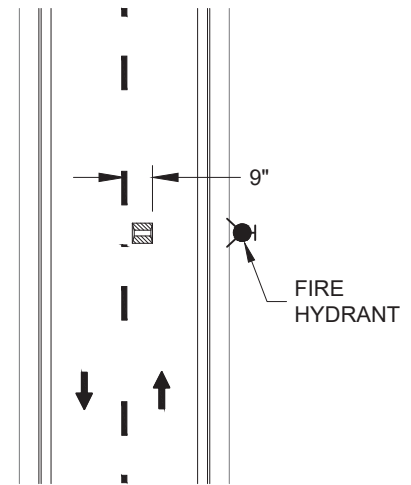


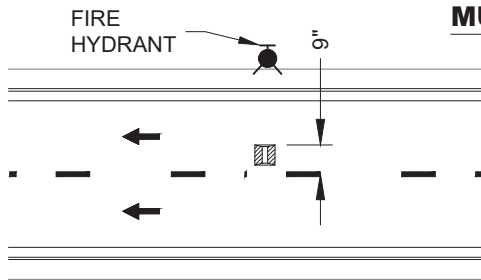
**HYDRANT MARKER PLACEMENT
AT INTERSECTIONS**



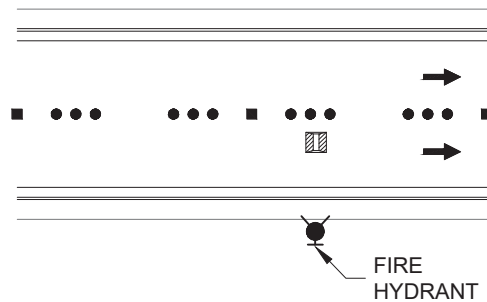
**HYDRANT MARKER PLACEMENT
AT MID BLOCK LOCATIONS**



**HYDRANT MARKER PLACEMENT
MULTI-LANE ROADS**





NOTE:
ON MULTI-LANE STREETS WITH NO RAISED ROAD
DOTS OR REFLECTORS, PLACE REFLECTOR 9" OFF
CENTERLINE.

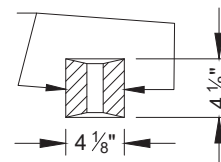


NOTE:
ON MULTI-LANE STREETS WITH PAVEMENT MARKER
STRIPING, PLACE THE HYDRANT MARKER IN THE
MIDDLE OF THE LANE CLOSEST TO THE HYDRANT.

LEGEND:

-  TWO-WAY BLUE
RETRO-REFLECTIVE MARKER
-  DIRECTION OF TRAVEL

RETRO-REFLECTIVE
SIDE TO FACE ON
COMING TRAFFIC



MARKER DETAIL:



APPROVED: Aug. X, 2025

STANDARD
DETAIL #

516

TITLE:
**HYDRANT MARKER
(BLUE DOT)
LOCATIONS**

