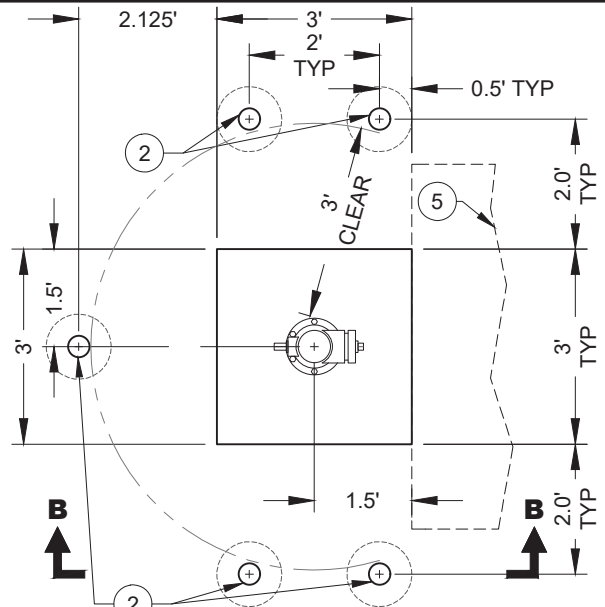
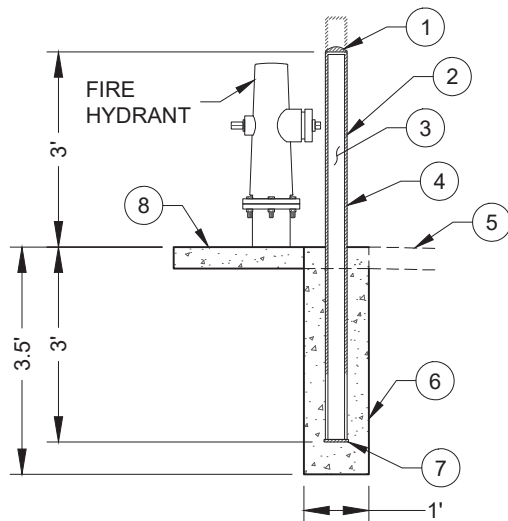


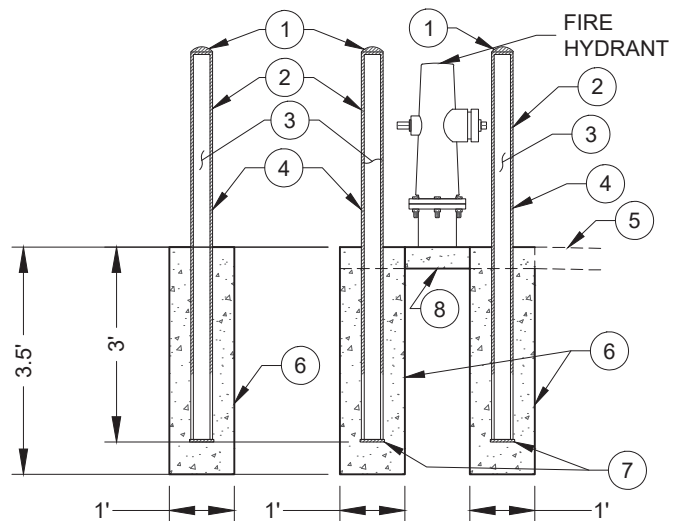
TYPE I LAYOUT



TYPE II LAYOUT



SECTION AA



SECTION BB

1	BOLLARD CAP SHALL HAVE DOME FINISH.
2	BOLLARDS SHALL BE FACTORY PAINTED OR POWDER COATED, COLOR TO MATCH FIRE HYDRANT, UNLESS OTHERWISE APPROVED BY CITY ENGINEER.
3	4" DIA, 6 FEET LONG SCHED 40, GALVANIZED PIPE. 3 FEET EMBEDDED IN MIN 4,000 PSI CONCRETE.
4	SCHEDULE 40 GALVANIZED PIPE
5	ADJACENT CONCRETE SIDEWALK
6	12" DIA, 3'-6" DEEP, MIN 4,000 PSI CONCRETE, CENTERED ON BOLLARD
7	1/4" WELDED CIRCULAR STEEL PLATE, 1/4" LIP
8	MIN 4,000 PSI CONCRETE SLAB FOR HYDRANT PAD

NOTES:

- A. IN NO WAY SHALL ANY BOLLARD BE INSTALLED IN DIRECT LINE WITH ANY HYDRANT OUTLET.
- B. FOR INSTALLATION OF TWO BOLLARDS, USE TYPE I LAYOUT. FOR INSTALLATION OF MORE THAN TWO BOLLARDS, USE TYPE II LAYOUT.
- C. ADDITIONAL BOLLARDS (AS REQUIRED BY CITY).



APPROVED: Aug. X, 2025

STANDARD
DETAIL #

517

TITLE:
**FIRE HYDRANT
BOLLARD DETAIL**

